



# HEATERS & BOILERS SAFETY VALVES



## SAFETY AND CHECK VALVES

### GENERAL DETAILS AND FUNCTIONING

Two important combined functions must be provided when accumulating hot water for sanitary usage, by means of electric, gas or wood-powered water heaters. These are:

- safety
- checking

a) **safety**- Our valves for water heaters, produced in a wide range of models, all have this dual function. The safety device consists in a loaded spring that exercises its action on a shutter. If the pressure in the thermo-accumulator increases over the calibration value, the shutter opens and the fluid comes out through the special drain.

b) **checking** – The check device is composed of a seal, a guide rod and a ring nut, creating a patented "non-drip" system, that allows the safety device to trigger only in the event of considerable expansion of the water contained in the water heater, in this way avoiding the repeated and annoying dripping of small amounts of water.

One of the special features of our valves is that they are completely silent when working. Valves for water heaters are produced in various sizes and versions, with or without the possibility of manual drainage. Both versions are made so that "unauthorised persons" are prevented from making any changes to the calibration carried out in the factory. The models "with lever" provide the possibility of manual drainage. Manual opening allows the water contained in the water heater to be emptied, without having to dismantle the valve. The valves must be installed on the water heaters' supply pipe (cold water).

All GNALI BOCIA safety valves are 97/23/CE (PED) homologated.

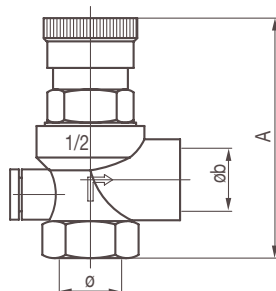
### CONSTRUCTIONAL FEATURES

- Body: EN 12165 - CW 617N
- Spring: Stainless steel
- Seal: Synthetic "anti-bonding" rubber
- Other parts: EN 12164 - CW 614N or heat resistant plastic materials
- Threading: Cylindrical, gas ISO 228/1 sockets
- Max. operating temp. +100°C
- STANDARD calibration pressure: 8 bars (other calibrations on request)
- 97/23/CE homologated (PED)



## SAFETY VALVES

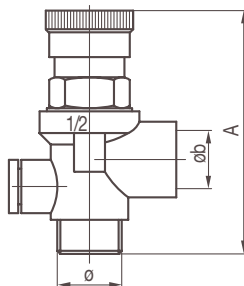
### SAFETY VALVES



Safety diaphragm valve in ethylene-propylene for boilers, solar panels, boilers lower than 30,000 Kcal/h, body in CW617N, steel spring. Sand-blasted version. Max temp. of fluid: 120°C. Fixed calibration: 2.5 - 6.0 bar. Manual opening by means of a cap. Manometer-holder socket (1/4" Gas F).

Code	ø	øb	A	B	Bar
724/25	1/2"	1/2"	72	43	2,5
724/30	1/2"	1/2"	72	43	3
724/35	1/2"	1/2"	72	43	3,5
724/60	1/2"	1/2"	72	43	6
764/25	3/4"	3/4"	77	47	2,5
764/30	3/4"	3/4"	77	47	3
764/35	3/4"	3/4"	77	47	3,5
764/60	3/4"	3/4"	77	47	6

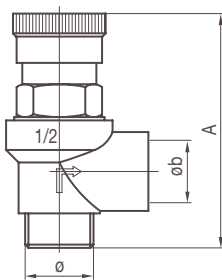
### SAFETY VALVES



Safety diaphragm valve in ethylene-propylene for boilers, solar panels, boilers lower than 30,000 Kcal/h, body in CW617N, steel spring. Sand-blasted version. Max temp. of fluid: 120°C. Fixed calibration: 2.5 - 6.0 bar. Manual opening by means of a cap. Manometer-holder socket (1/4" Gas F).

Code	ø	øb	A	B	Bar
723/25	1/2"	1/2"	72	43	2,5
723/30	1/2"	1/2"	72	43	3
723/35	1/2"	1/2"	72	43	3,5
723/60	1/2"	1/2"	72	43	6
763/25	3/4"	3/4"	77	47	2,5
763/30	3/4"	3/4"	77	47	3
763/35	3/4"	3/4"	77	47	3,5
763/60	3/4"	3/4"	77	47	6

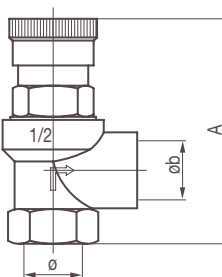
### SAFETY VALVES



Safety diaphragm valve in ethylene-propylene for boilers, solar panels, boilers lower than 30,000 Kcal/h, body in CW617N, steel spring. Sand-blasted version. Max temp. of fluid: 120°C. Fixed calibration: 2.5 - 6.0 bar. Manual opening by means of a cap.

Cod	ø	øb	A	B	Bar
722/25	1/2"	1/2"	72	43	2,5
722/30	1/2"	1/2"	72	43	3
722/35	1/2"	1/2"	72	43	3,5
722/60	1/2"	1/2"	72	43	6
762/25	3/4"	3/4"	77	47	2,5
762/30	3/4"	3/4"	77	47	3
762/35	3/4"	3/4"	77	47	3,5
762/60	3/4"	3/4"	77	47	6

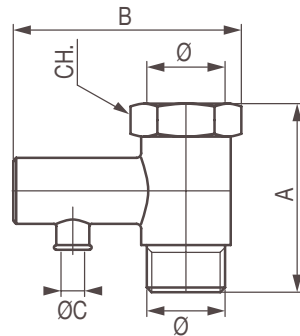
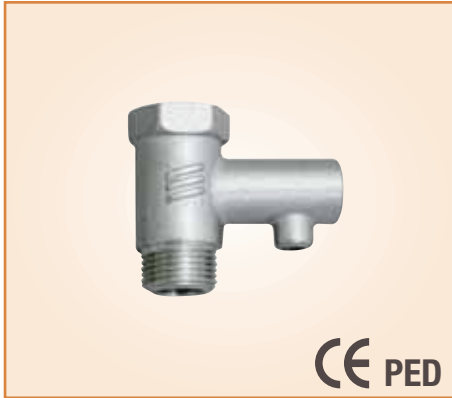
### SAFETY VALVES



Safety diaphragm valve in ethylene-propylene for boilers, solar panels, boilers lower than 30,000 Kcal/h, body in CW617N, steel spring. Sand-blasted version. Max temp. of fluid: 120°C. Fixed calibration: 2.5 - 6.0 bar. Manual opening by means of a cap.

Code	Code	øb	A	B	Bar
721/25	1/2"	1/2"	72	43	2,5
721/30	1/2"	1/2"	72	43	3
721/35	1/2"	1/2"	72	43	3,5
721/60	1/2"	1/2"	72	43	6
761/25	3/4"	3/4"	77	47	2,5
761/30	3/4"	3/4"	77	47	3
761/35	3/4"	3/4"	77	47	3,5
761/60	3/4"	3/4"	77	47	6

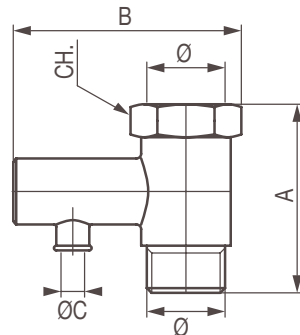
SAFETY AND CHECK VALVES FOR WATER HEATERS



Safety valve. Body: CW617N Spring: Stainless steel. Gaskets synthetic "anti-bonding" rubber. Cylindrical gas socket threading ISO 228/1. Max. operating temp. + 100°C. Calibration pressure 1-11bar (other calibrations on requests). PED

Code	SIZE	A	B	CH	ØC
115	3/8"	40	50	21	5

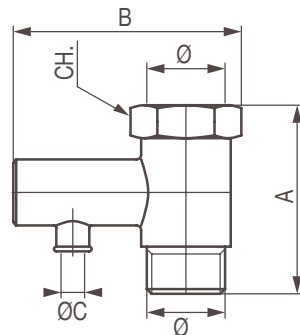
SAFETY AND CHECK VALVES FOR WATER HEATERS



Safety valve. Body: CW617N Spring: Stainless steel. Gaskets synthetic "anti-bonding" rubber. Cylindrical gas socket threading ISO 228/1. Max. operating temp. + 100°C. Calibration pressure 1-11bar (other calibrations on requests). PED

Code	SIZE	A	B	CH	ØC
142	1/2"	41	52	25	5

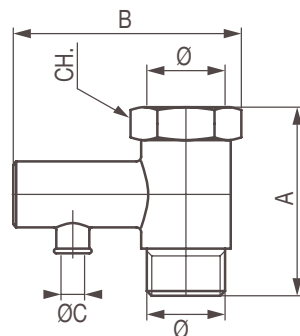
SAFETY AND CHECK VALVES FOR WATER HEATERS



Safety valve. Body: CW617N Spring: Stainless steel. Gaskets synthetic "anti-bonding" rubber. Cylindrical gas socket threading ISO 228/1. Max. operating temp. + 100°C. Calibration pressure 1-11bar (other calibrations on requests). PED

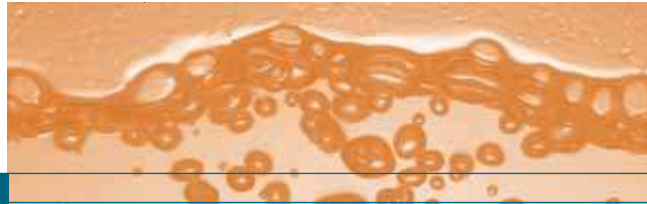
Code	SIZE	A	B	CH	ØC
131	1/2"	45	58	25	9

SAFETY AND CHECK VALVES FOR WATER HEATERS

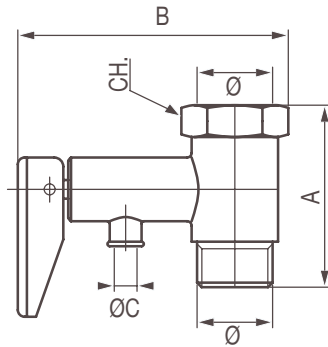


Safety valve. Body: CW617N Spring: Stainless steel. Gaskets synthetic "anti-bonding" rubber. Cylindrical gas socket threading ISO 228/1. Max. operating temp. + 100°C. Calibration pressure 1-11bar (other calibrations on requests). PED

Code	SIZE	A	B	CH	ØC
152	3/4"	57	71	32	9



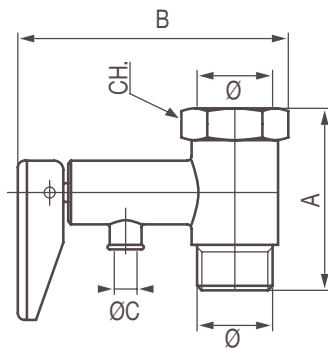
**SAFETY AND CHECK VALVES FOR WATER HEATERS**



Safety valve. Body: CW617N Spring: Stainless steel. Gaskets synthetic "anti-bonding" rubber. Cylindrical gas socket threading ISO 228/1. Max. operating temp. + 100°C. Calibration pressure 1-11bar (other calibrations on requests). PED

Code	SIZE	A	B	CH	ØC
144	1/2"	41	60	25	5

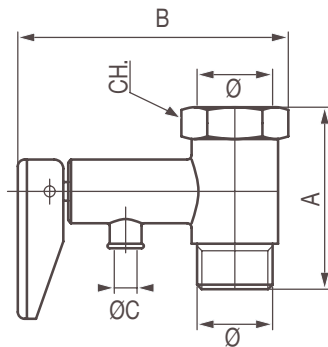
**SAFETY AND CHECK VALVES FOR WATER HEATERS**



Safety valve. Body: CW617N Spring: Stainless steel. Gaskets synthetic "anti-bonding" rubber. Cylindrical gas socket threading ISO 228/1. Max. operating temp. + 100°C. Calibration pressure 1-11bar (other calibrations on requests). PED

Code	SIZE	A	B	CH	ØC
140	1/2"	45	65	25	9

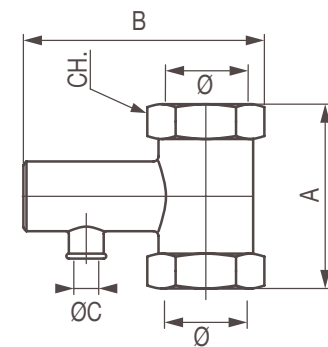
**SAFETY AND CHECK VALVES FOR WATER HEATERS**



Safety valve. Body: CW617N Spring: Stainless steel. Gaskets synthetic "anti-bonding" rubber. Cylindrical gas socket threading ISO 228/1. Max. operating temp. + 100°C. Calibration pressure 1-11bar (other calibrations on requests). PED

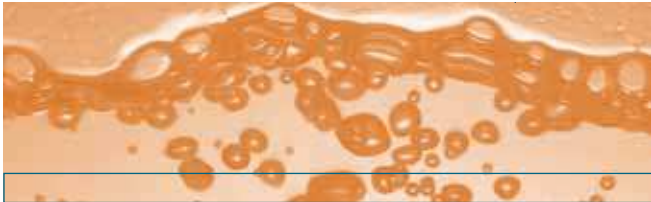
Code	SIZE	A	B	CH	ØC
172	3/4"	57	80	32	9

**SAFETY AND CHECK VALVES FOR WATER HEATERS**



Safety valve. Body: CW617N Spring: Stainless steel. Gaskets synthetic "anti-bonding" rubber. Cylindrical gas socket threading ISO 228/1. Max. operating temp. + 100°C. Calibration pressure 1-11bar (other calibrations on requests). PED

Code	SIZE	A	B	CH	ØC
153	1"	69	76	40	9

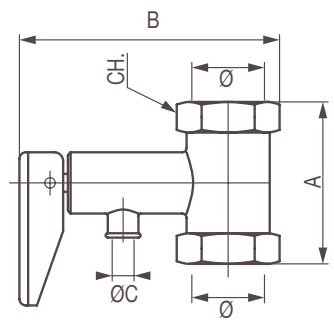


## SAFETY VALVES

### SAFETY AND CHECK VALVES FOR WATER HEATERS



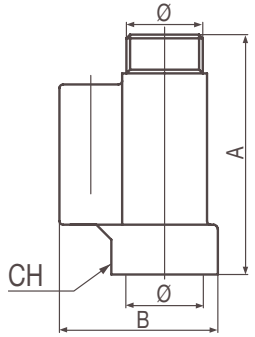
CE PED



Safety valve. Body: CW617N Spring: Stainless steel. Gaskets synthetic "anti-bonding" rubber. Cylindrical gas socket threading ISO 228/1. Max. operating temp. + 100°C. Calibration pressure 1-11bar (other calibrations on requests). PED

Code	SIZE	A	B	CH	ØC
173	1"	69	85	40	9

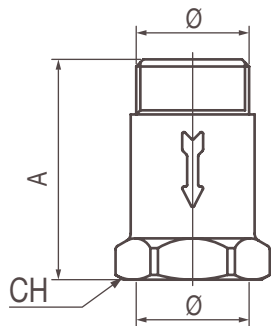
### SAFETY AND CHECK VALVES FOR WATER HEATERS



Safety valve. Body: CW617N Spring: Stainless steel. Gaskets synthetic "anti-bonding" rubber. Cylindrical gas socket threading ISO 228/1. Max. operating temp. + 100°C. Calibration pressure 1-11bar (other calibrations on requests). PED

Code	SIZE	A	B	CH	ØC
180	1/2"	65	41	25	

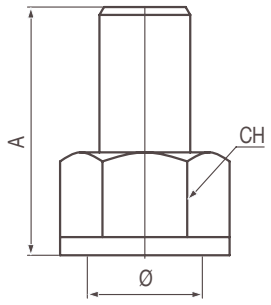
### SAFETY AND CHECK VALVES FOR WATER HEATERS



Safety valve. Body: CW617N Spring: Stainless steel. Gaskets synthetic "anti-bonding" rubber. Cylindrical gas socket threading ISO 228/1. Max. operating temp. + 100°C. Calibration pressure 1-11bar (other calibrations on requests). PED

Code	SIZE	A	B	CH	ØC
130	1/2"	49	-	25	

### SAFETY AND CHECK VALVES FOR WATER HEATERS



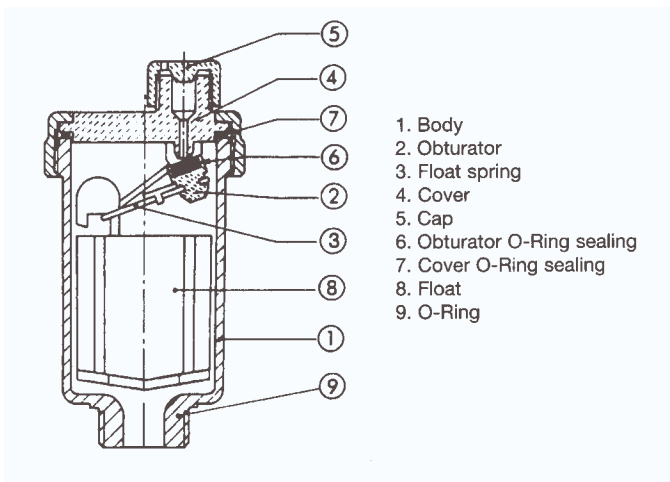
Safety valve. Body: CW617N Spring: Stainless steel. Gaskets synthetic "anti-bonding" rubber. Cylindrical gas socket threading ISO 228/1. Max. operating temp. + 100°C. Calibration pressure 1-11bar (other calibrations on requests). PED

Code	Ø	A	B	CH	ØC
250	1/2"	41	-	24	

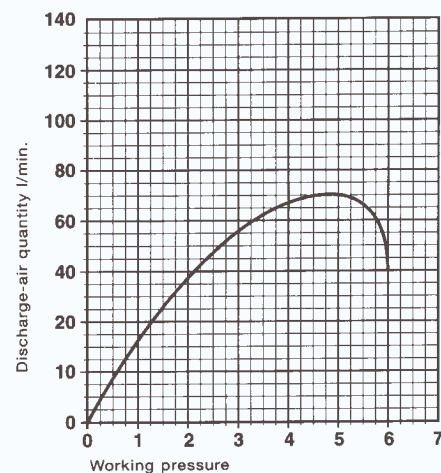
# AIR VENTING VALVES

## GENERAL DETAILS FUNCTIONING

Automatic air discharge valve, body in CW617N brass and cap in Hostaform, with moving and floating parts in synthetic PP material. Stainless steel internal lever. Stainless steel internal lever. PP discharge cap, NBR O-ring seal. Can be combined with the automatic check valve 801 - 802 - 803.

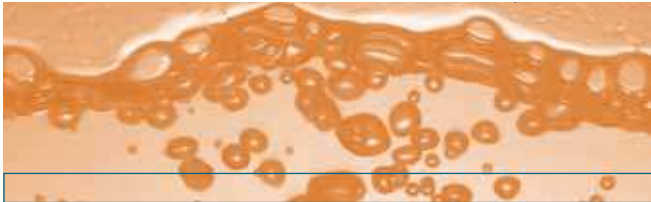


DISCHARGING CAPACITY DIAGRAM

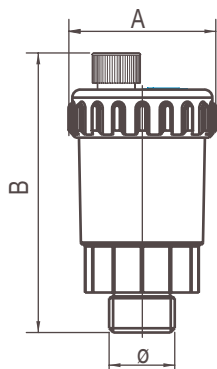


## CONSTRUCTIONAL FEATURES

- Body: EN 12165 - CW 617N
- Spring: Stainless steel
- Seal: Synthetic "anti-bonding" rubber
- Other parts: Brass CW-617-N or heat resistant plastic materials
- Threading: Cylindrical, gas ISO 228/1 sockets
- Max. operating temp. + 100°C
- Max pressure: 10 bars



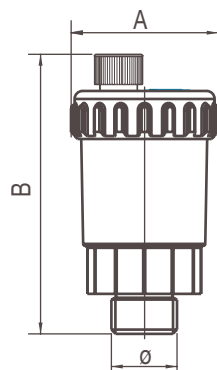
## AUTOMATIC AIR VENTING VALVE



Automatic air vent valve, body in CW617N brass and cover in Hostafoam, with moving and floating parts in synthetic material, PP. Nickel plate finishing. Can be combined with automatic check valve 801 - 802 - 803

Code	Ø	A	B	Size
822N	3/8"	35	75	120
823N	1/2"	35	75	122

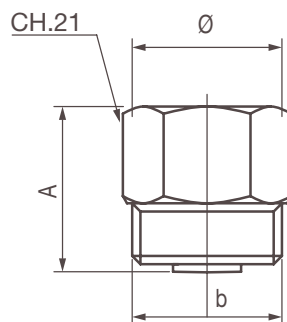
## AUTOMATIC AIR VENTING VALVE



Automatic air vent valve, body in CW617N brass and cover in Hostafoam, with moving and floating parts in synthetic material, PP. Sand blasted finishing. Can be combined with automatic check valve 801 - 802 - 803

Code	Ø	A	B	Size
822	3/8"	35	75	120
823	1/2"	35	75	122

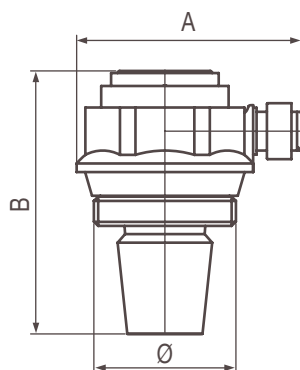
## CHECK VALVES



Automatic check valve for air valve 821-3. Spring in stainless steel and insert in Noril with glass fibre. Body in CW617N brass.

Code	Ø	b	A
801	3/8"	3/8"	23
802	3/8"	1/2"	23
803	1/2"	1/2"	23

## AIR VALVES



Automatic radiator air valve, body in CW617N brass and cover in Hostafoam, with moving and floating parts in synthetic material, PP. Max. temperature 110°

Code	Ø	A	B	Size
200-00	1"DX	50	60	115
204-00	1"SX	50	60	115